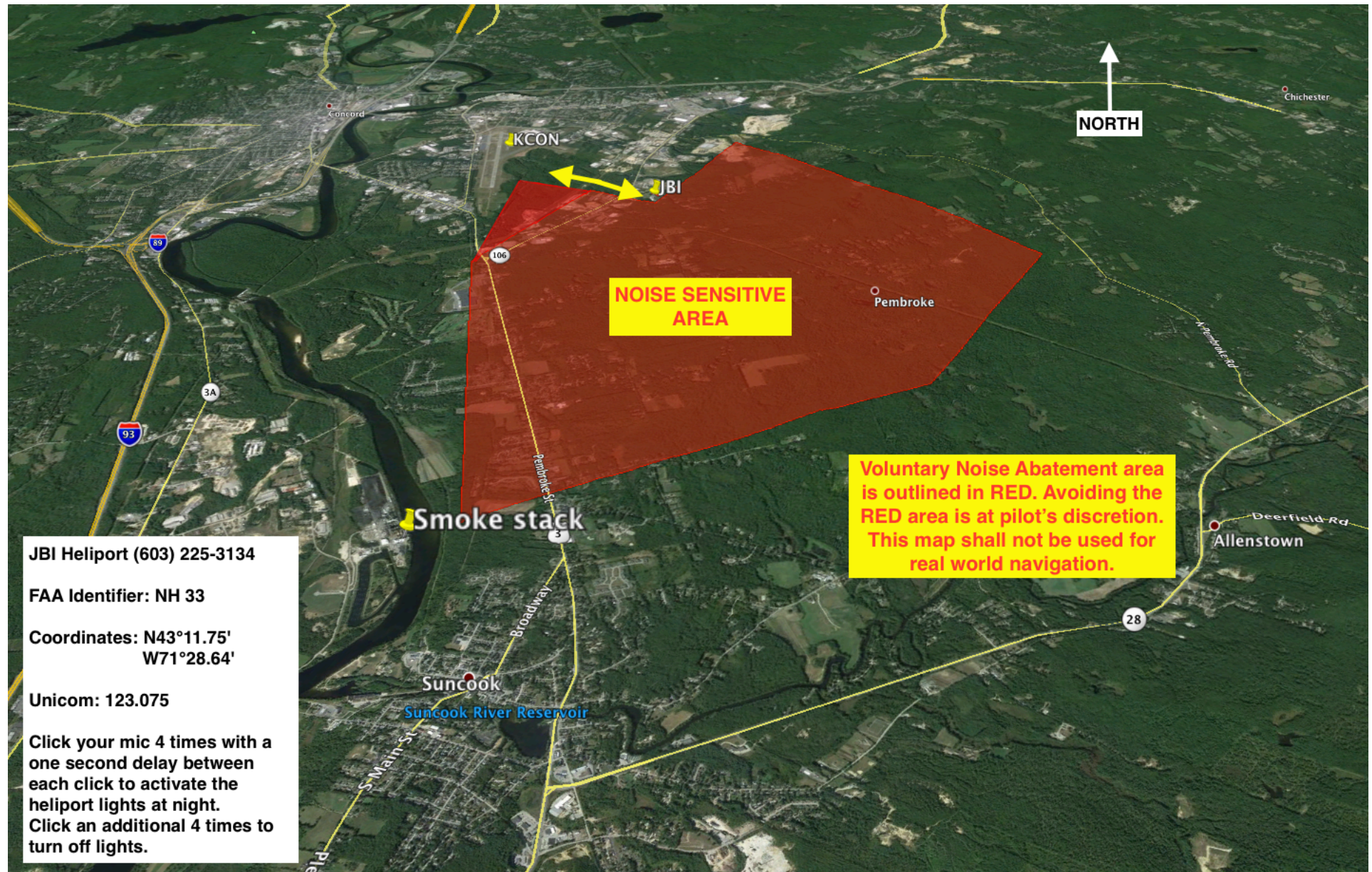


ALL PILOTS, please using caution when operating around the Concord Airport (KCON), you may self announce on Concord CTAF 122.7



JBH Heliport (603) 225-3134

FAA Identifier: NH 33

Coordinates: N43°11.75'
W71°28.64'

Unicom: 123.075

Click your mic 4 times with a
one second delay between
each click to activate the
heliport lights at night.
Click an additional 4 times to
turn off lights.

NOISE SENSITIVE
AREA

NORTH

JBH

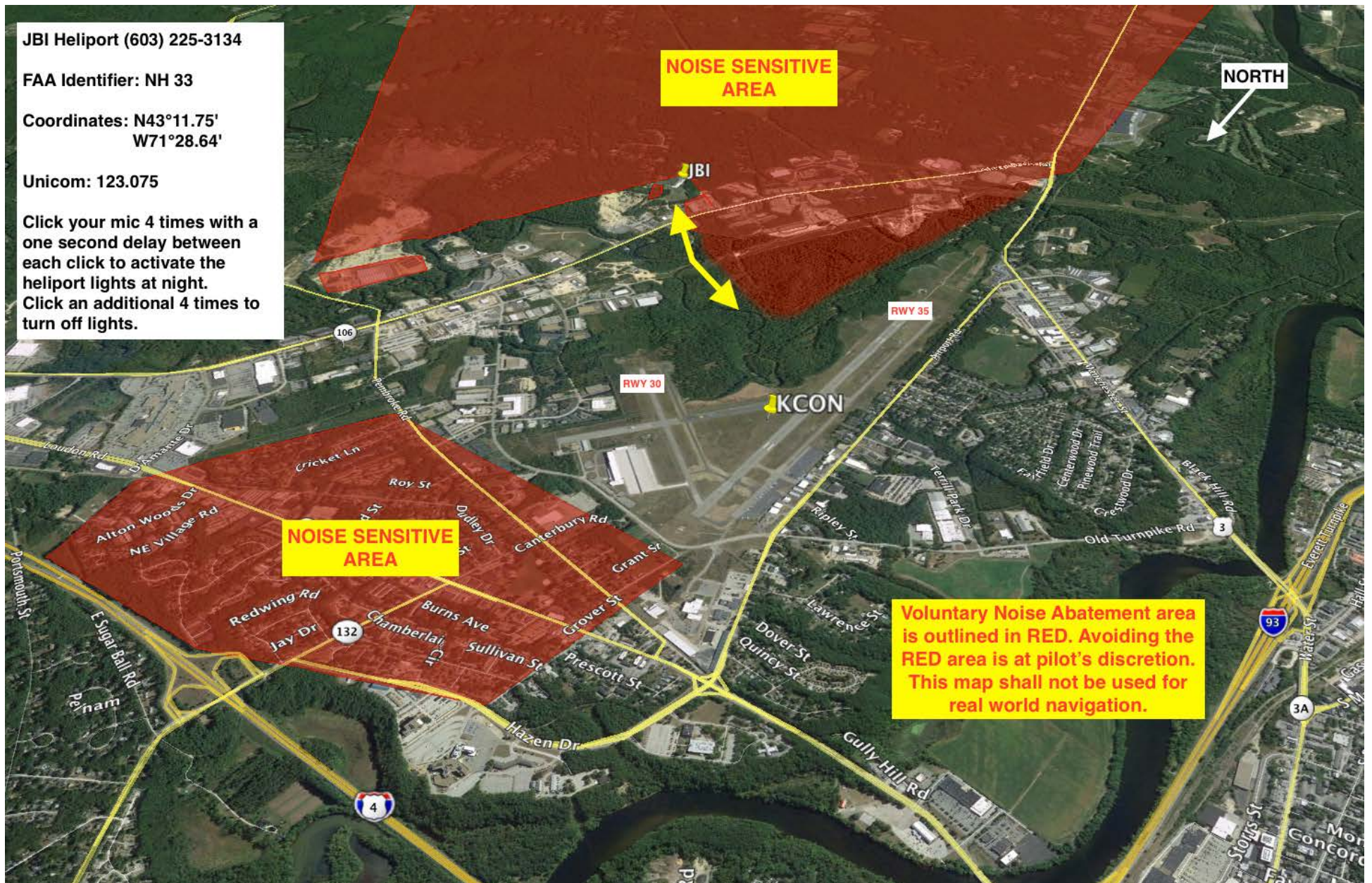
RWY 35

RWY 30

KCON

NOISE SENSITIVE
AREA

Voluntary Noise Abatement area
is outlined in RED. Avoiding the
RED area is at pilot's discretion.
This map shall not be used for
real world navigation.



JBI Heliport (603) 225-3134

FAA Identifier: NH 33

Coordinates: N43°11.75'
W71°28.64'

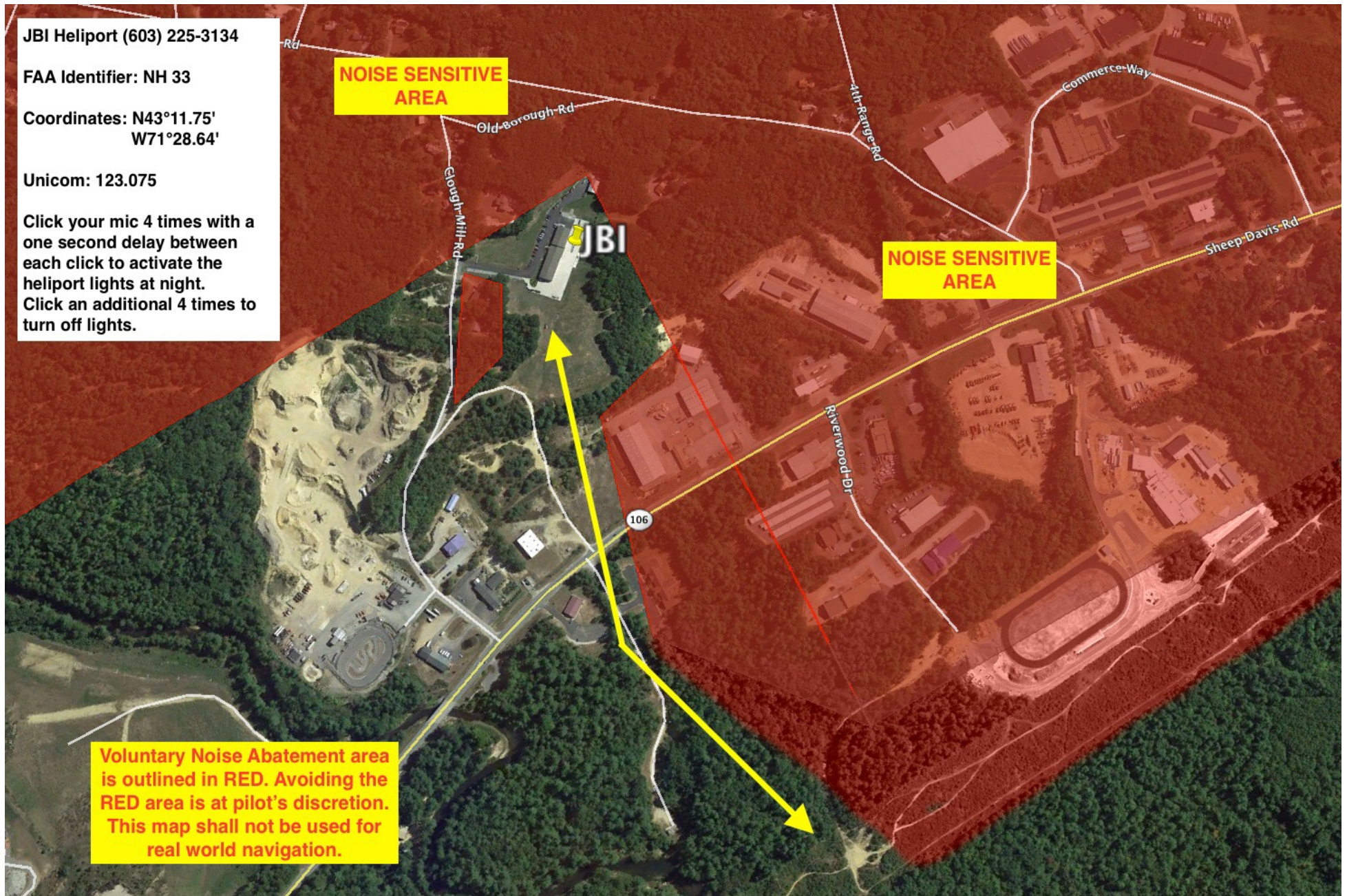
Unicom: 123.075

Click your mic 4 times with a
one second delay between
each click to activate the
heliport lights at night.
Click an additional 4 times to
turn off lights.

**NOISE SENSITIVE
AREA**

**NOISE SENSITIVE
AREA**

**Voluntary Noise Abatement area
is outlined in RED. Avoiding the
RED area is at pilot's discretion.
This map shall not be used for
real world navigation.**



JBI Heliport (603) 225-3134

FAA Identifier: NH33

**Coordinates: N43°11.75' /
W71°28.64'**

Unicom: 123.075

**Click your mic 4 times with a
one second delay between each
click to activate the heliport
lights at night.
Click an additional 4 times to
turn off lights.**

